

Field Information Notice

FIN #: 011	Rev. A Page 1
Date: 03/06/2007	
Product: DX-TL910U/2500U/45XXJ/5000U	
Subject: Changing Daylight Savings Time	
Target Audience: Sales/Dealers/User	
Originator: Ramon Carriedo (949) 465-6439	
www.mitsubishi-imaging.com	

GENERAL INFORMATION:

Mitsubishi DVR's support Auto Daylight Savings Time (AST). This year, DST arrives March 11th, three weeks earlier than the usual first Sunday in April. DST will continue through the first Sunday in November (4th). The different dates for DST for 2007 are dictated by the U.S Energy Policy Act of 2005. The purpose is to save energy.

Mitsubishi DVR's DST Date and Time can be changed to accommodate this kind of change. The DVR's preset settings for the IN is the 1st week in April and the Out is the last Sunday of October. Changing the DST to the new Date and Time is the customers responsibility. Changing the DST can be done quickly at the DVR or Remotely via the PC software. Following are the procedures on how to change the DST via SETUP at the DVR and Remotely.

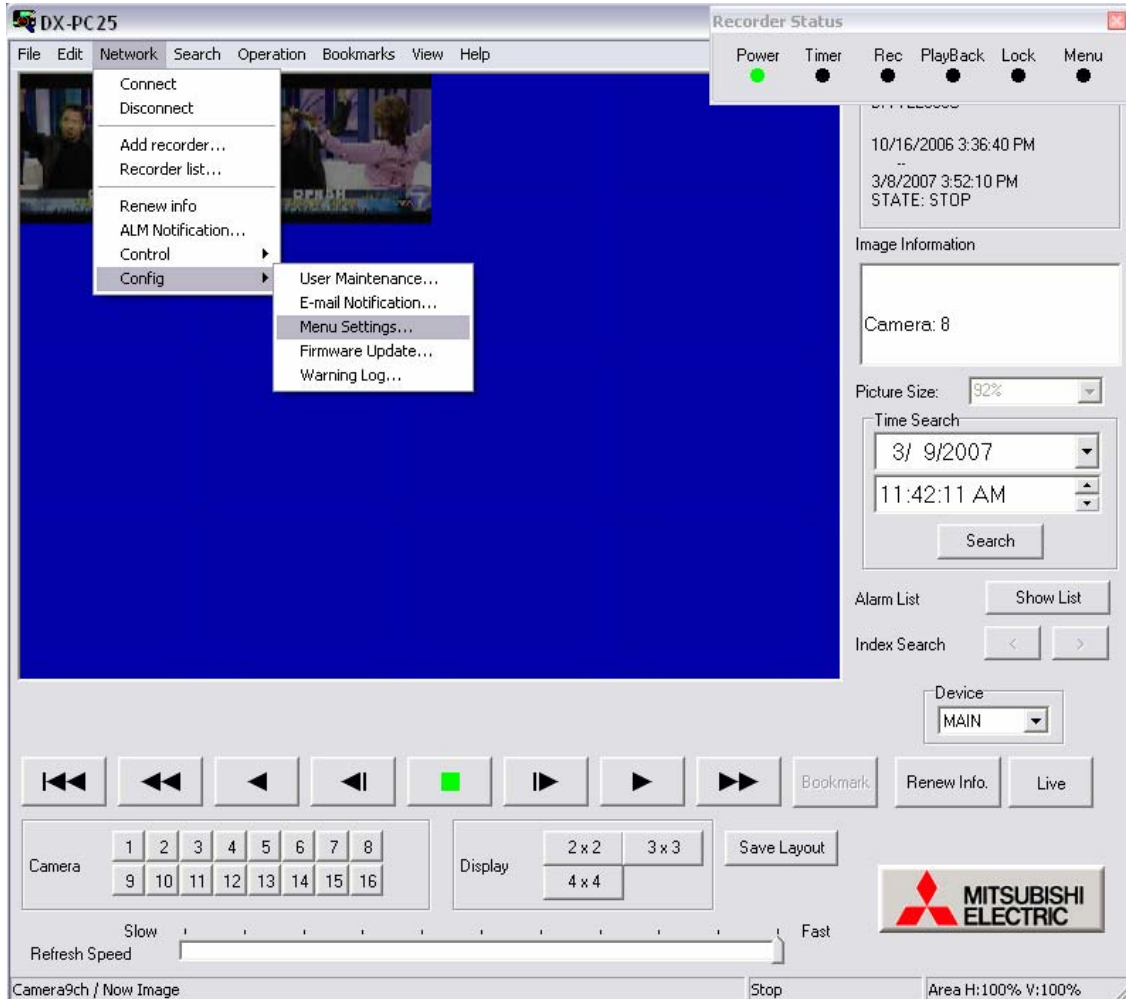
DX-TL910U and DX-TL2500U (SETUP, use the DVR Jog and Shuttle to move the cursor in the menu and to make changes in the menu).

At the DVR press the SETUP button. Now, Time Date/Display Settings is the first selection listed. Use the SHUTTLE ring turning it to the right one time to select this field. Time Date Adjust is the first field listed. Again turn the SHUTTLE ring to the right one time to select it. Now use the JOG ring (ring inside shuttle) and move the cursor down to IN of Day Light Setting. Turn the SHUTTLE ring one time to the right to enter the row of information (the day will be highlighted in white). Turn the Jog to the right to highlight the week. Turn the SHUTTLE to the right one time to select the field (field turns Red and is blinking). Make the change with the JOG ring stopping at 2nd week. Now turn the SHUTTLE ring to the right to accept the new setting (field again goes back to white). Use the Ring to move the cursor to the Month field. Use the SHUTTLE to select the field (field turns Red and is blinking), use the Jog to change the setting and input MARCH, use the SHUTTLE to the right to accept the change and turn the Shuttle to the LEFT to exit the row field. The cursor is back at IN, now use the JOG and Shuttle to move to the OUT row and make the needed changes as described above. Once all changes are made exit the menu (press SETUP button) and the new changes will be in effect.

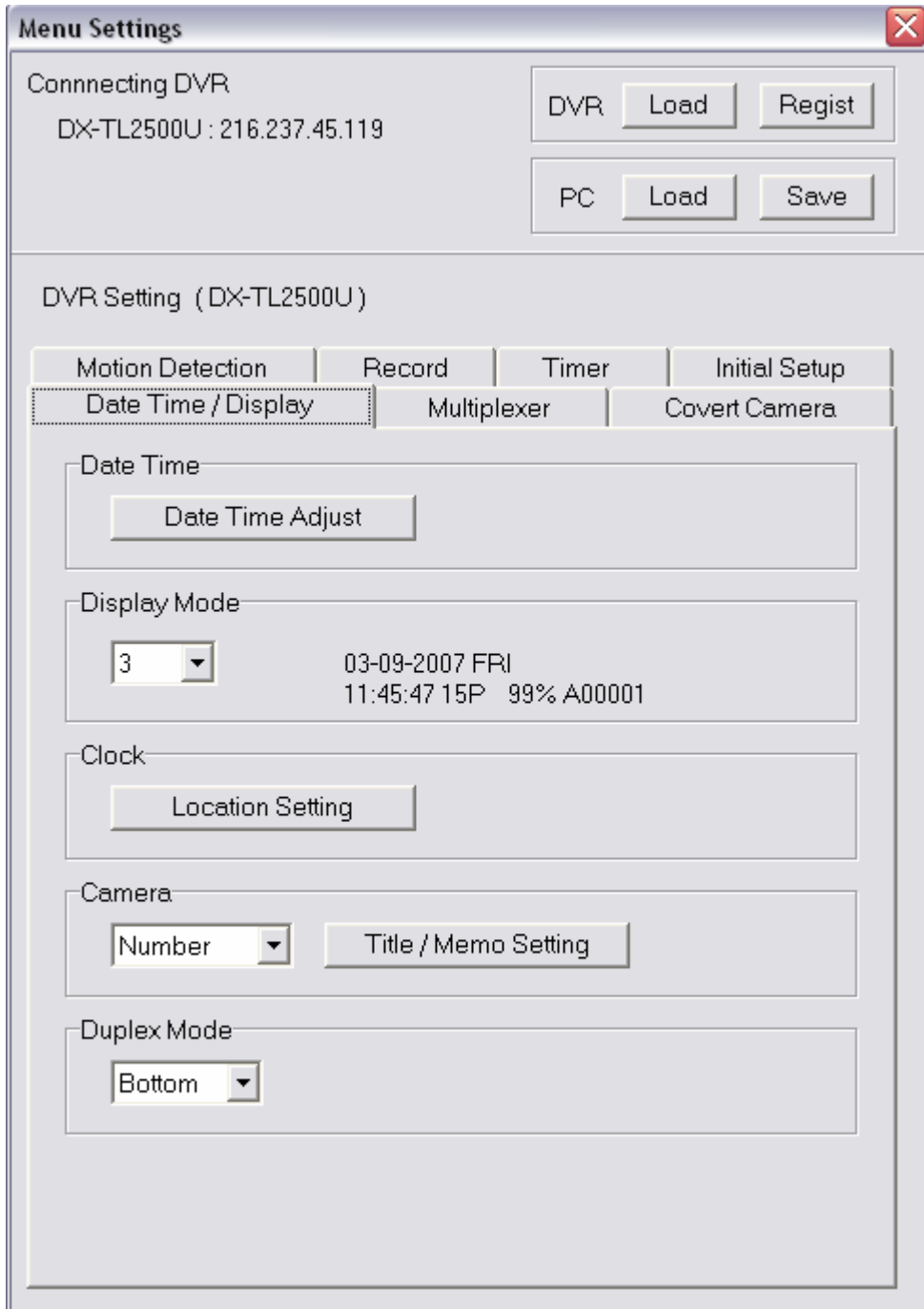
MITSUBISHI IP (Security Products)

DX-PC25U Application Software:

Launch the DX-PC25U, once connected follow the screen settings.



When the Menu Setting screen is displayed click on Date Time Adjust.



Menu Settings

Connecting DVR
DX-TL2500U : 216.237.45.119

DVR Load Regist
PC Load Save

DVR Setting (DX-TL2500U)

Motion Detection Record Timer Initial Setup
Date Time / Display Multiplexer Covert Camera

Date Time
Date Time Adjust

Display Mode
3 03-09-2007 FRI
11:45:47 15P 99% A00001

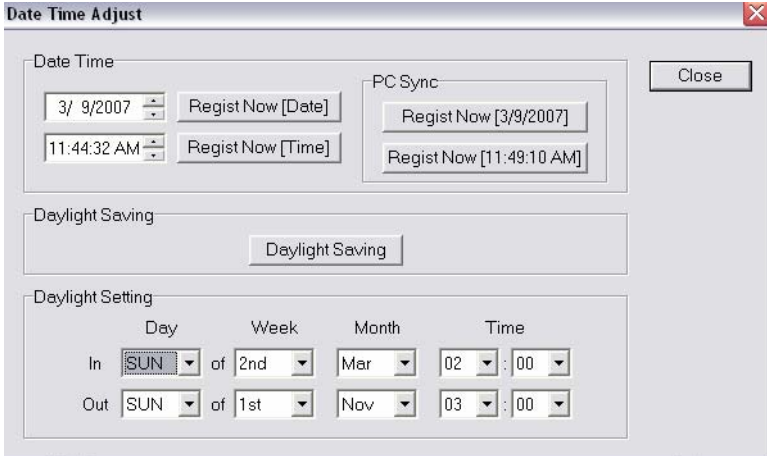
Clock
Location Setting

Camera
Number Title / Memo Setting

Duplex Mode
Bottom

MITSUBISHI IP (Security Products)

Input the new Week (2nd) and Month (Mar) for IN. Also make the needed changes in the OUT by selecting 1st for the Week and Nov for the Month. Once done click on the “X” to close the screen.

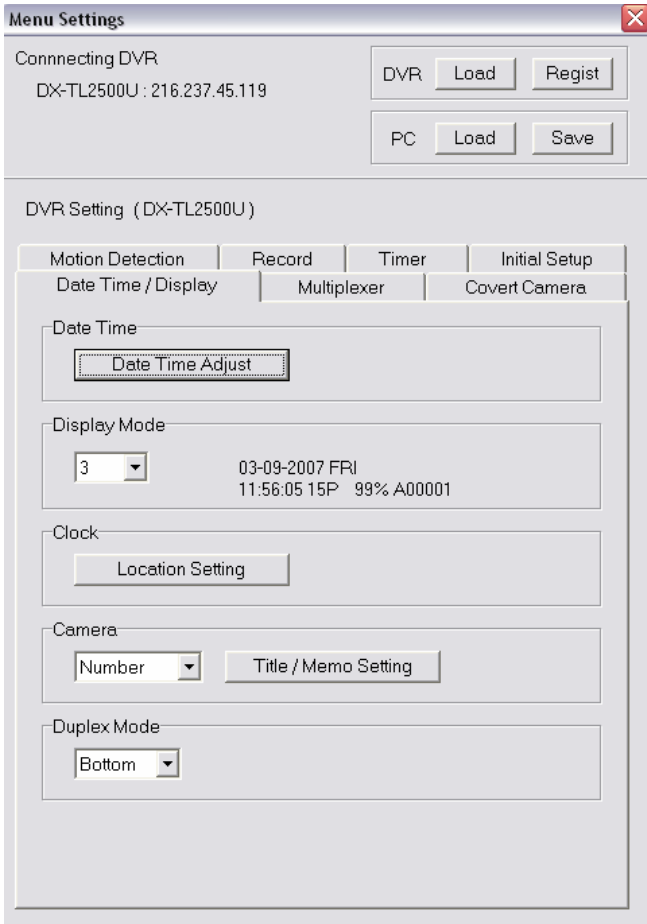


The "Date Time Adjust" dialog box contains the following sections:

- Date Time:** Includes date (3/ 9/2007) and time (11:44:32 AM) fields, each with a "Register Now" button. A "PC Sync" section has "Register Now" buttons for both date and time.
- Daylight Saving:** A "Daylight Saving" button.
- Daylight Setting:** A table for setting In and Out times.

	Day	Week	Month	Time
In	SUN	2nd	Mar	02 : 00
Out	SUN	1st	Nov	03 : 00

When the Menu Settings screen is displayed, click on DVR REGIST to save the new settings to the DVR. The DVR will go through a power OFF, power ON process and come back on line (click OK when prompted) and the unit will go through a. The new settings are now in effect.



The "Menu Settings" dialog box shows the following configuration options:

- Connecting DVR:** DX-TL2500U : 216.237.45.119. Buttons: DVR Load, DVR Regist, PC Load, PC Save.
- DVR Setting (DX-TL2500U):**

Motion Detection	Record	Timer	Initial Setup
Date Time / Display	Multiplexer	Covert Camera	

Date Time: Date Time Adjust button

Display Mode: 3, 03-09-2007 FRI, 11:56:05 15P 99% A00001

Clock: Location Setting button

Camera: Number dropdown, Title / Memo Setting button

Duplex Mode: Bottom dropdown

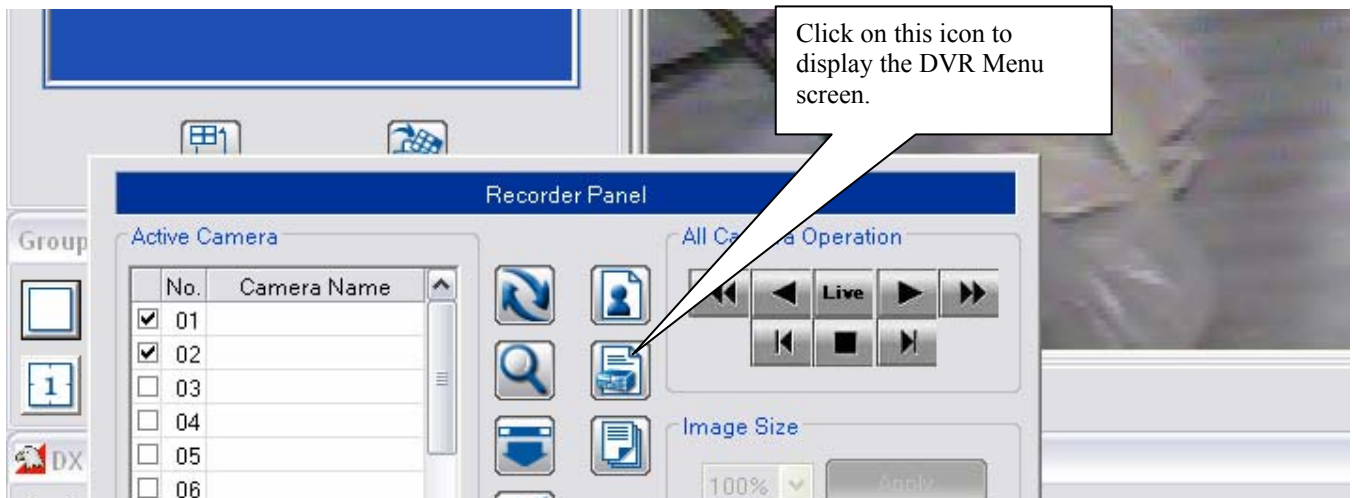
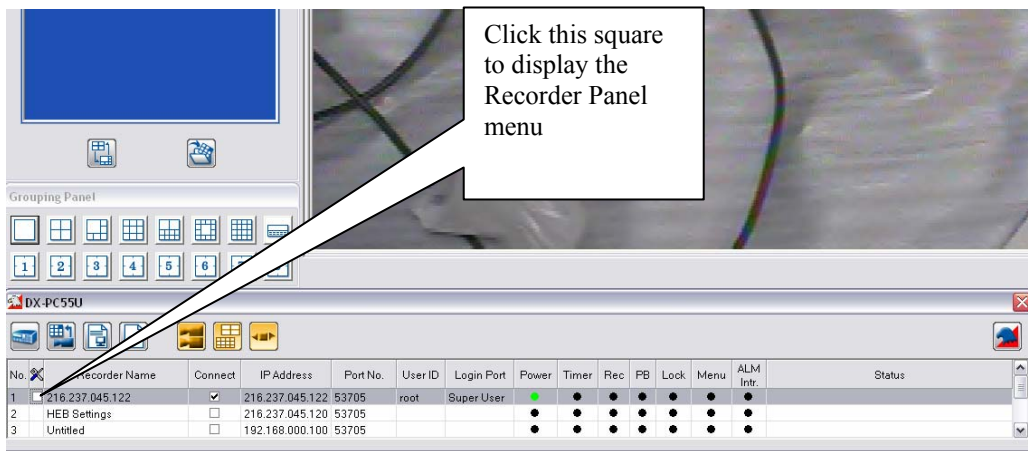
MITSUBISHI IP (Security Products)

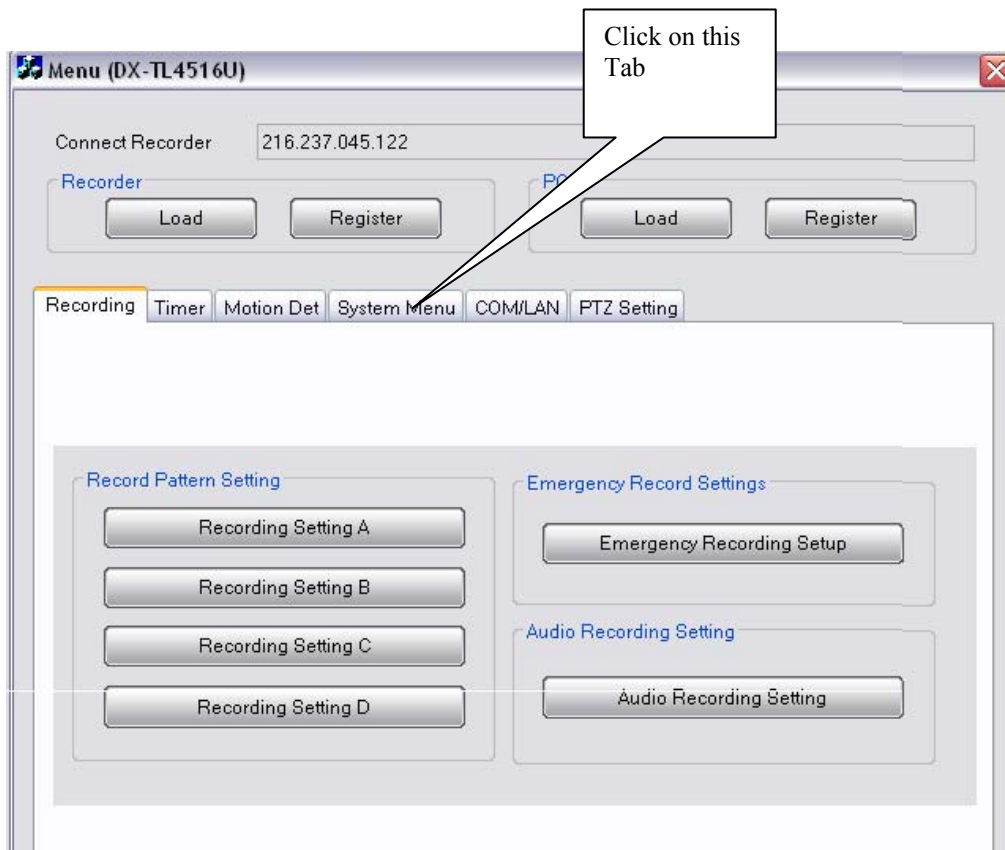
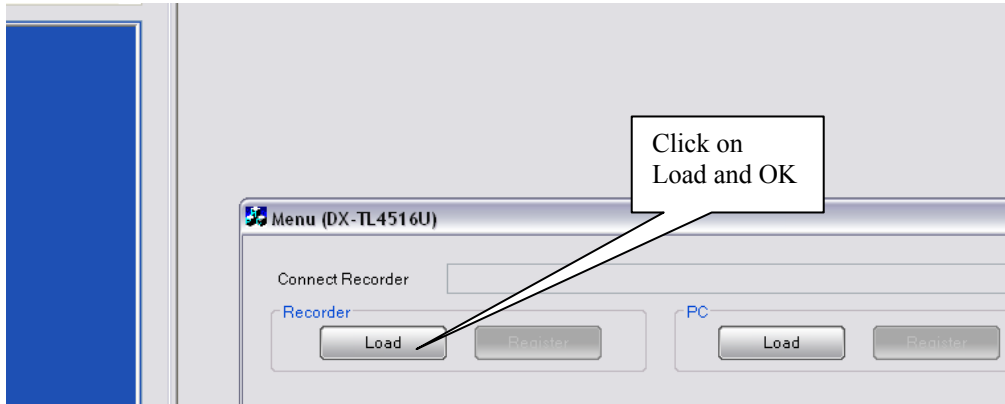
DX-TL45XXU and DX-TL5000U:

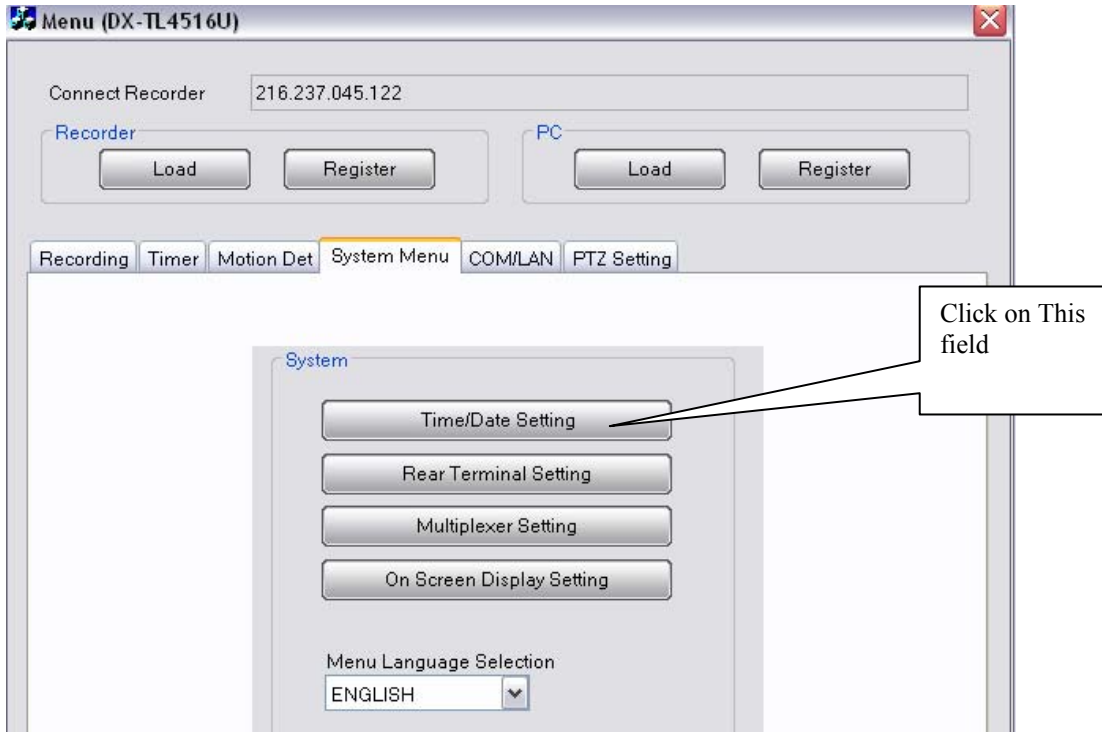
Activate the units GUI menu by pressing the SETUP button or clicking the left mouse button. Once the User Menu is displayed click on NEXT to go to the SETUP menu. Click on System (#4). Now click on Time/Date Setting (#1). Click on "SET" of Day Light Savings Setting. The IN is highlighted; click the "Week" field and select 2nd. Now click on the "Month" field and select Mar (for March). Now click on the OUT field and again change the "Week" field to 1st and the "Month" field to Nov (November). When done, click on Return, Return and Exit and Exit again to exit the DVR menu system.

DX-PC55U:

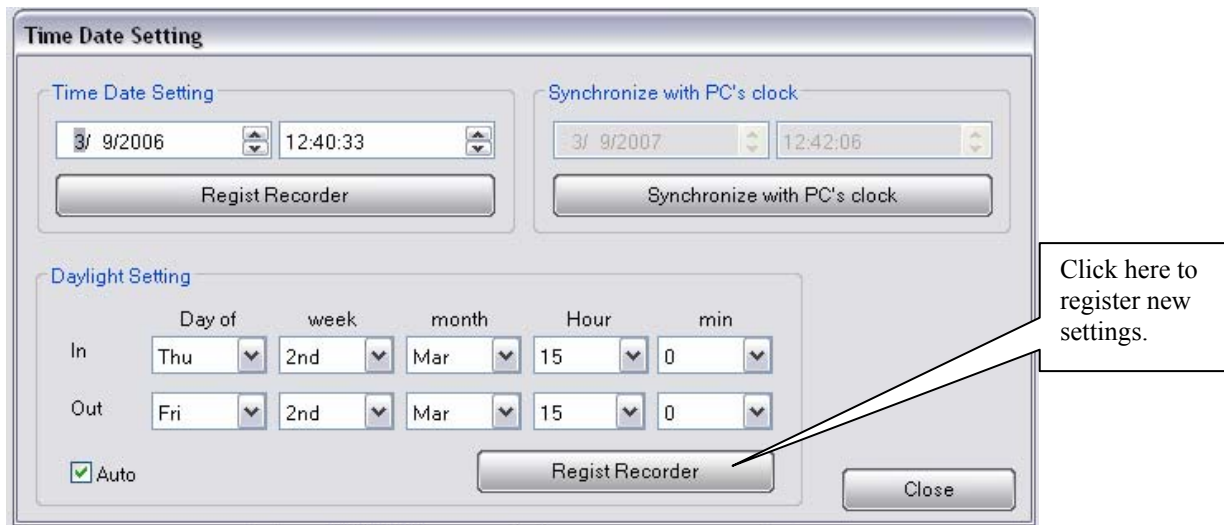
Launch the DX-PC55U, once connected follow the screen settings.







When the Time Date Settings screen is displayed in the IN field enter 2nd for the week and Mar for the Month. In the OUT row enter 1st for the week and Nov for the month. Once done click on Regist Recorder field and the new settings will take into affect.



Close the screen and exit the menu.